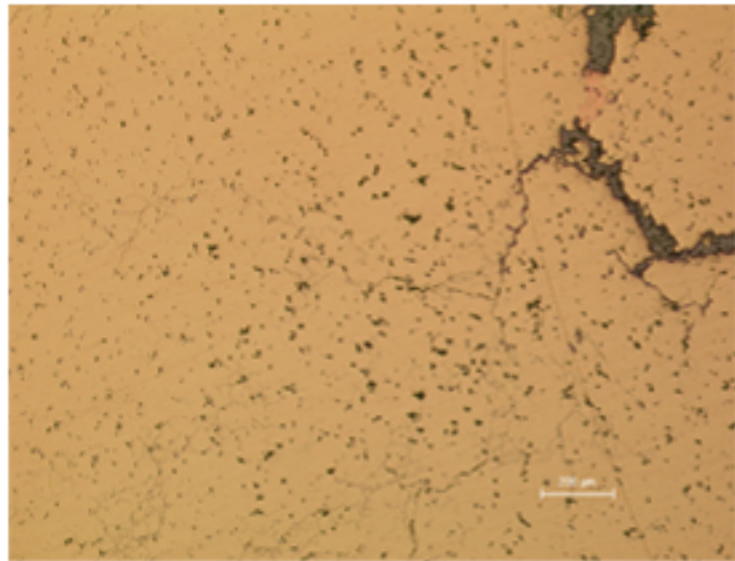


B91 - BRACELET WITH PLUG ENDS



B91.1

Identification

Sample: B91
Card reference: S114
Origin: Loraine Halstatt

Description

Alloy with high Cu content, with a somewhat 'red' appearance.
 Many cuprite inclusions. Inter- and transcrystalline corrosion.

Figure captions

B91.1

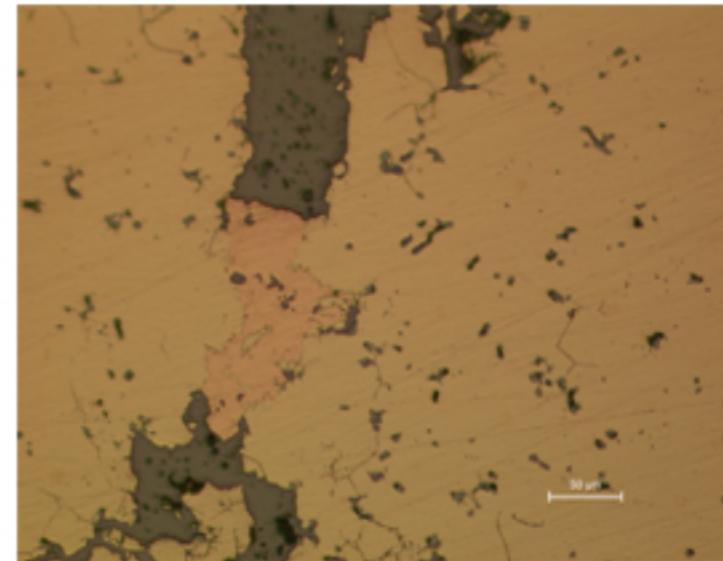
General view of the center of the section, showing a high concentration of pores and impurities, which are mostly oxides.

B91.2

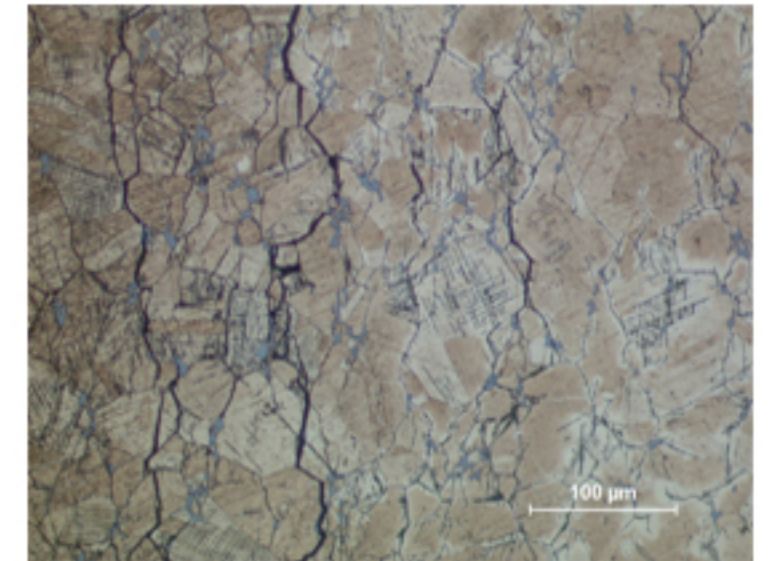
Detail of a metallic copper area located in the middle of oxides.

B91.3

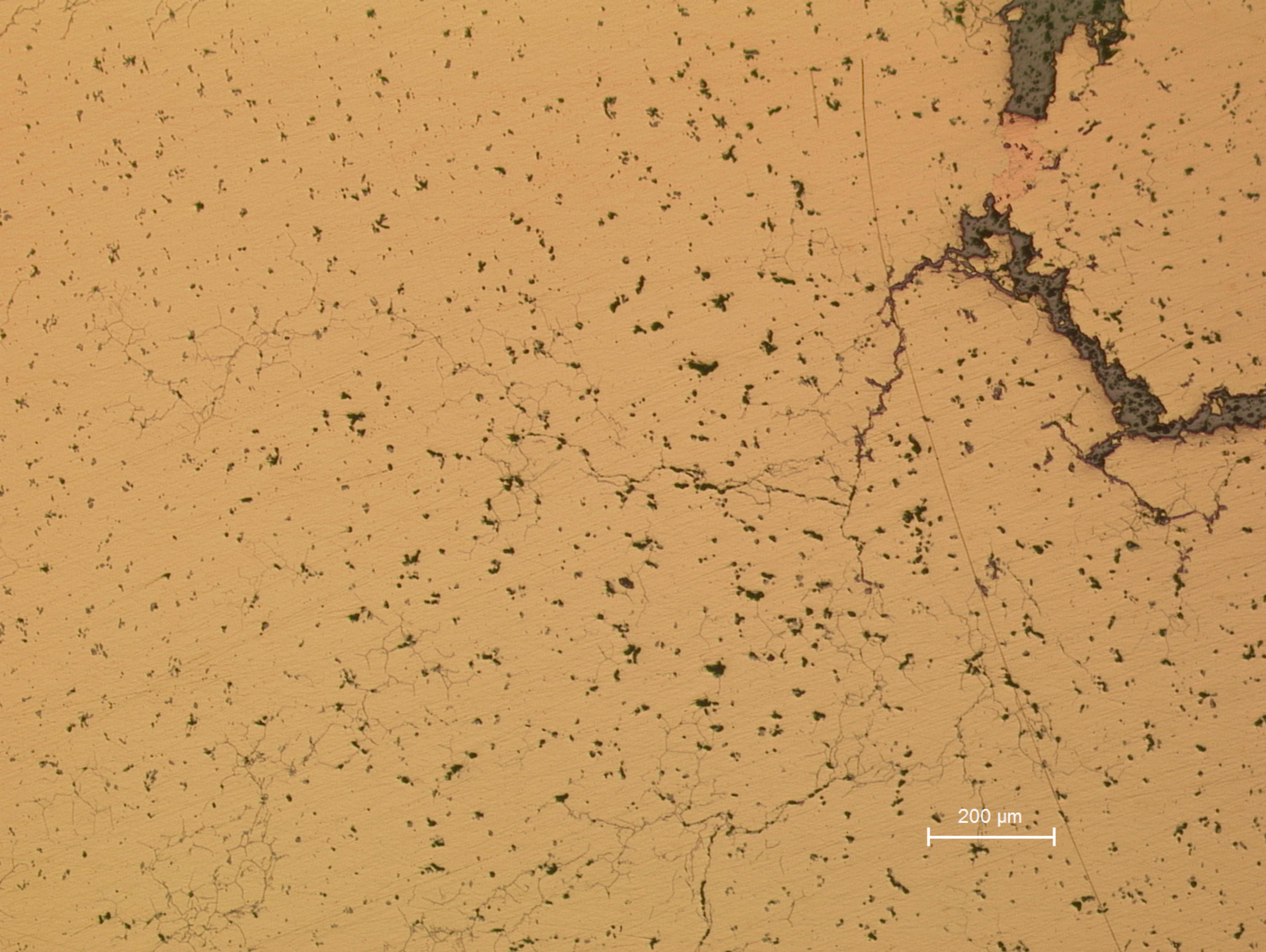
Recrystallized grains showing annealing twins and some slip lines; many intergranular cracks can also be seen.



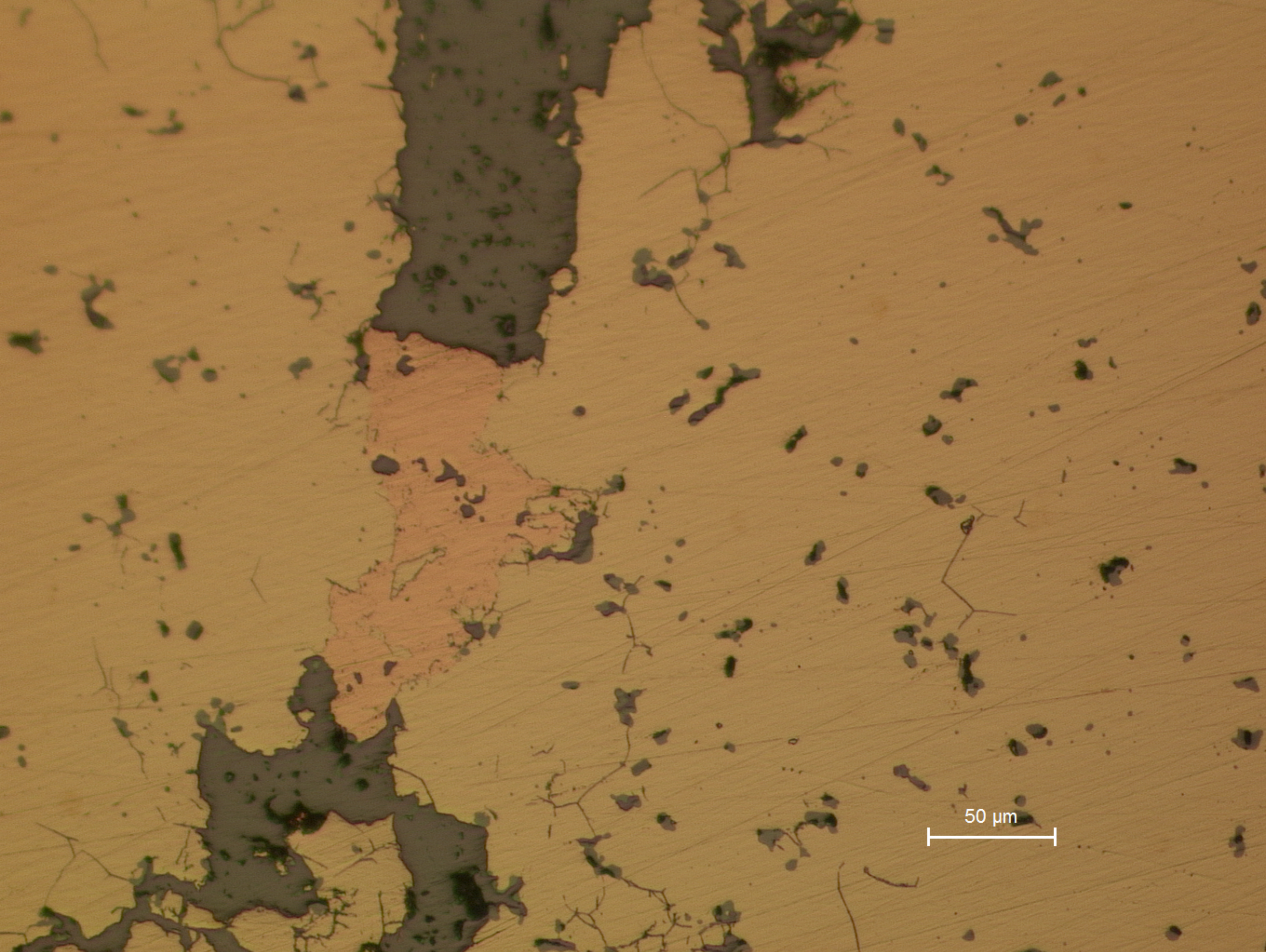
B91.2



B91.3

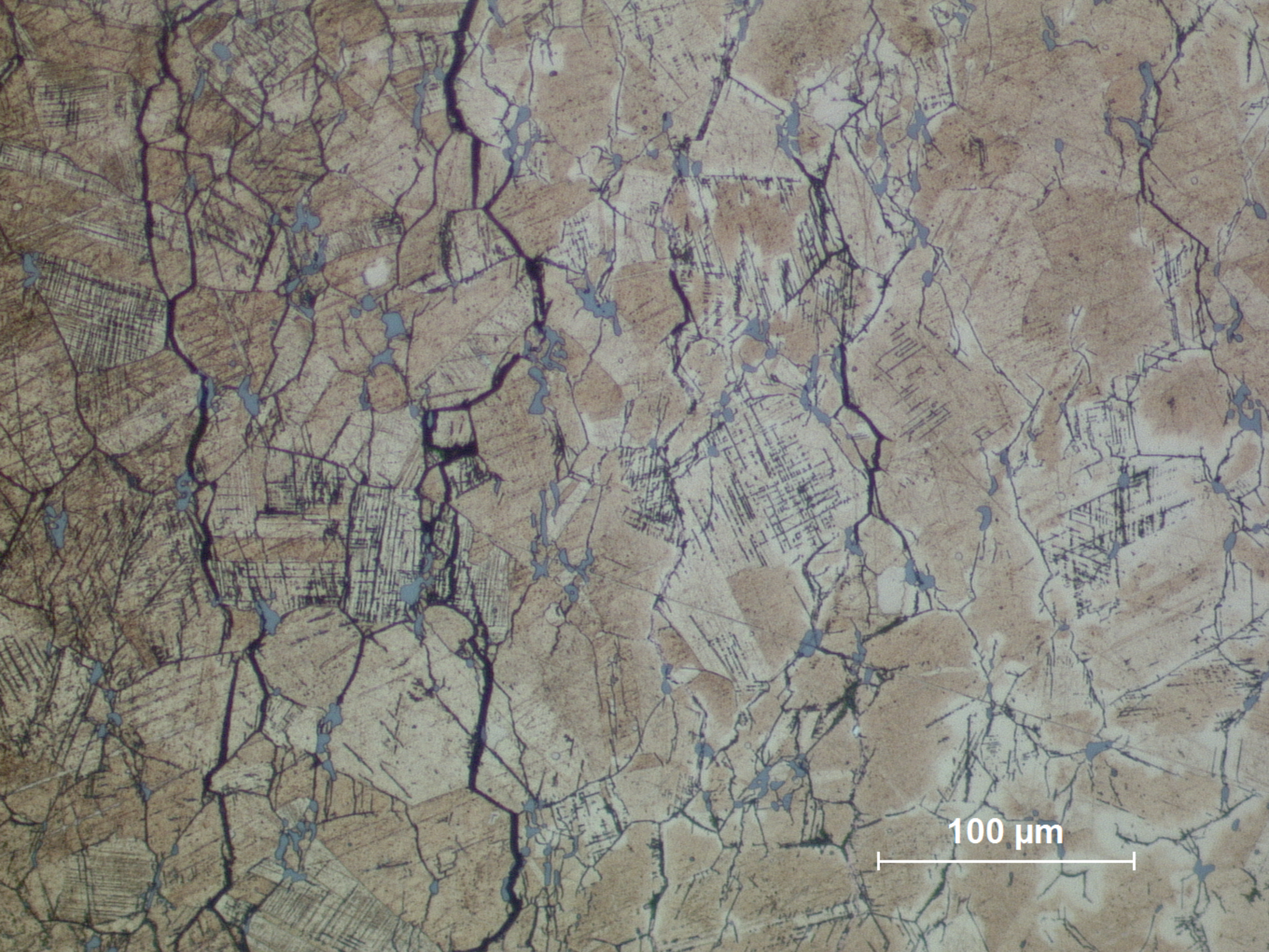


B91.1
General view of the center of the section, showing a high concentration of pores and impurities, which are mostly oxides.



50 μm

B91.2
Detail of a metallic copper area located in the middle of oxides.



100 μm

B91.3
Recrystallized grains showing annealing twins and some slip lines; many intergranular cracks can also be seen.