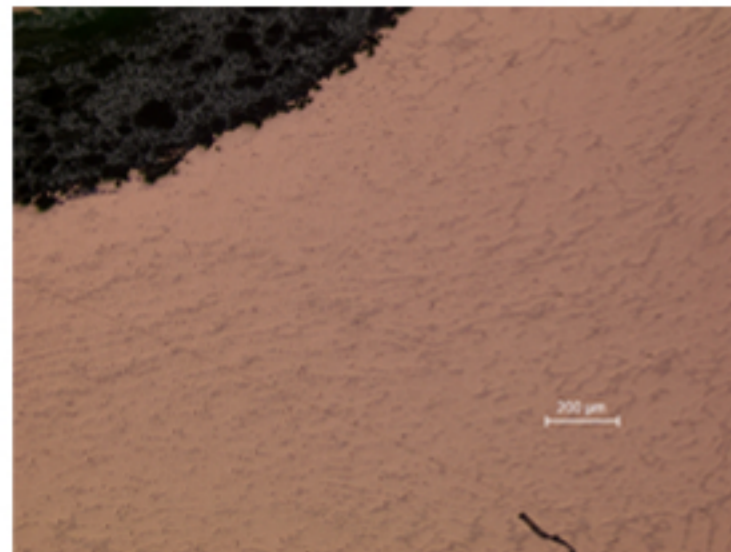
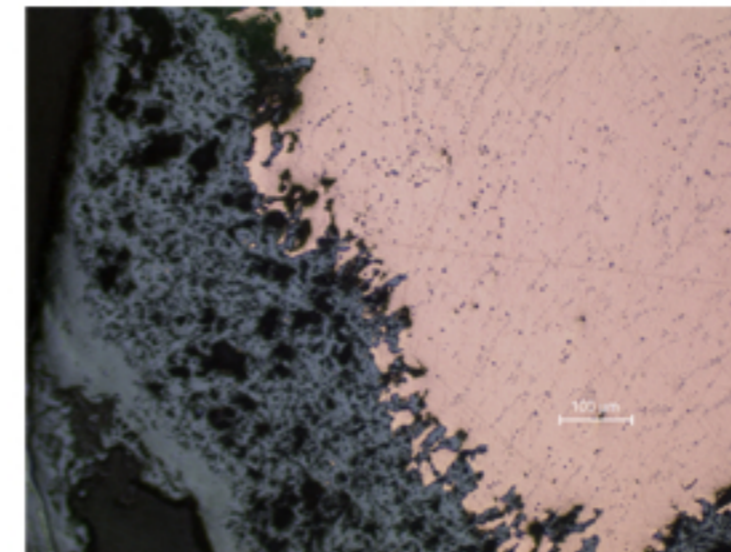


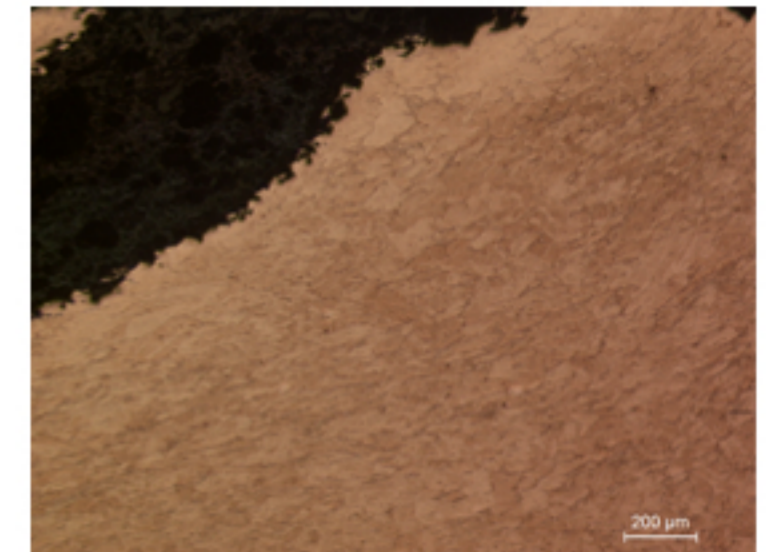
B44 - SMALL INGOT



B44.1



B44.2



B44.3

Identification

Sample: B44 (B45)
Card reference: S95
Origin: Tiahuanaco (Mexico)
Location: Collection AFL

Description

Native copper, hammered, no traces of oxides. Grains are deformed in the direction of working.

Figure captions

B44.1

General view: the net of small inclusions delineates the grains, which are elongated following the direction of working.

B44.2

General view of the (corroded) surface region: the size of the globular inclusions increases.

B44.3

General view showing elongated grains, deformed in the direction of working (etchant: aqueous FeCl_3).

B44.4

Detail showing the elongation of the grains (etchant: aqueous FeCl_3).

B44.5

General view of another region of the sample, showing the corrosion layer on the left and heterogeneous distribution of inclusions in the metal (in this case none are near the surface).

B44.6

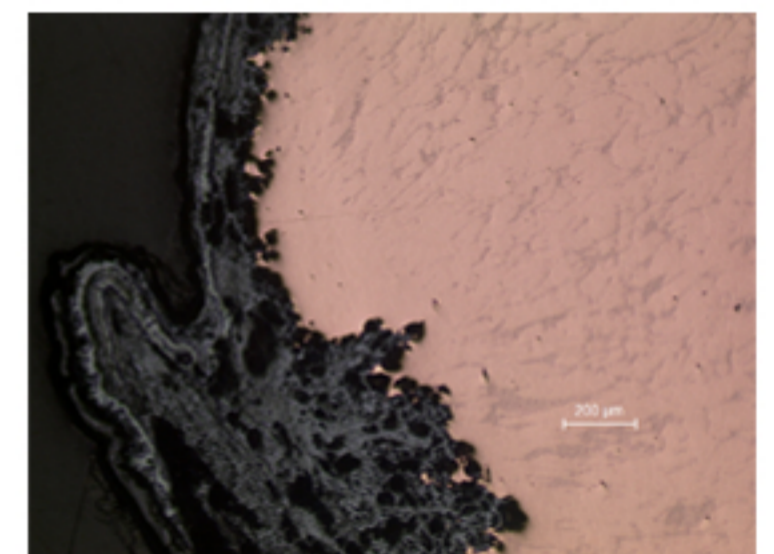
Detail showing the preferential situation of the globular inclusions along the grain boundaries.

B44.7

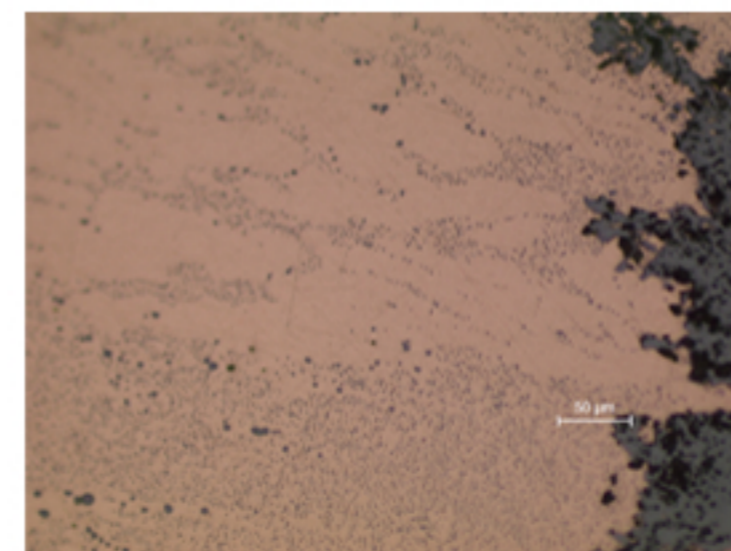
Detail showing that even where grains are recrystallized (displaying a polygonal shape with annealing twins) the distribution of the inclusions reveals the deformation due to previous working (etchant: aqueous FeCl_3).



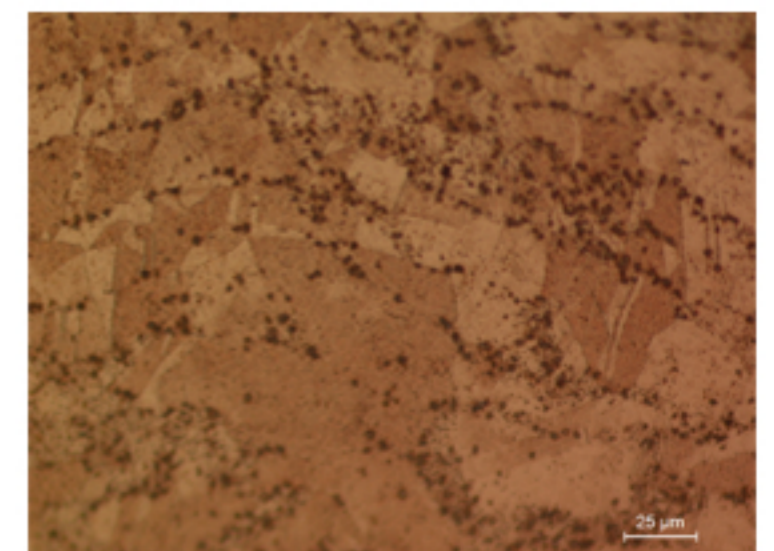
B44.4



B44.5



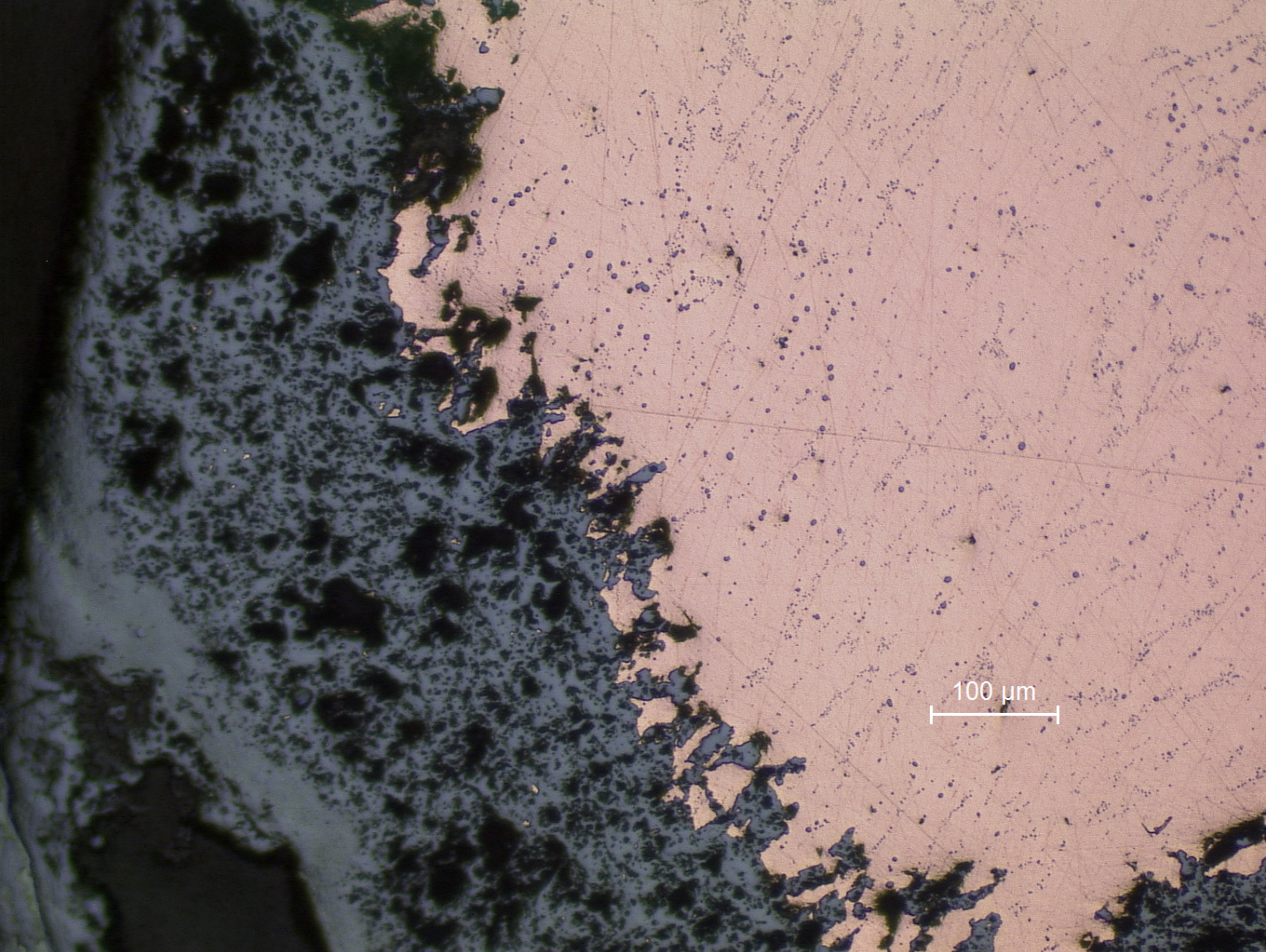
B44.6



B44.7

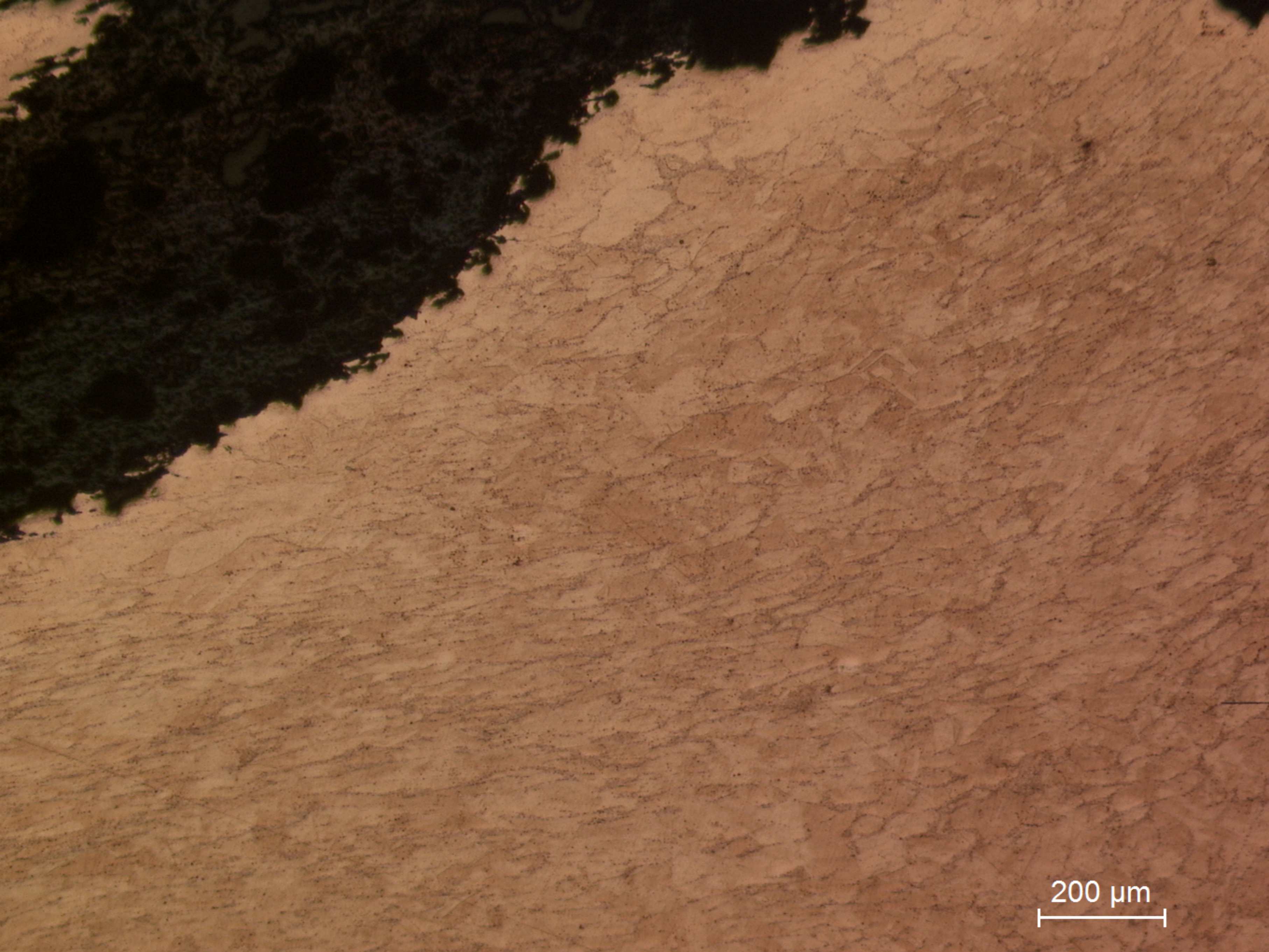


B44.1
General view: the net of small inclusions delineates the grains, which are elongated following the direction of working.



100 μm

B44.2
General view of the (corroded) surface region: the size of the globular inclusions increases.



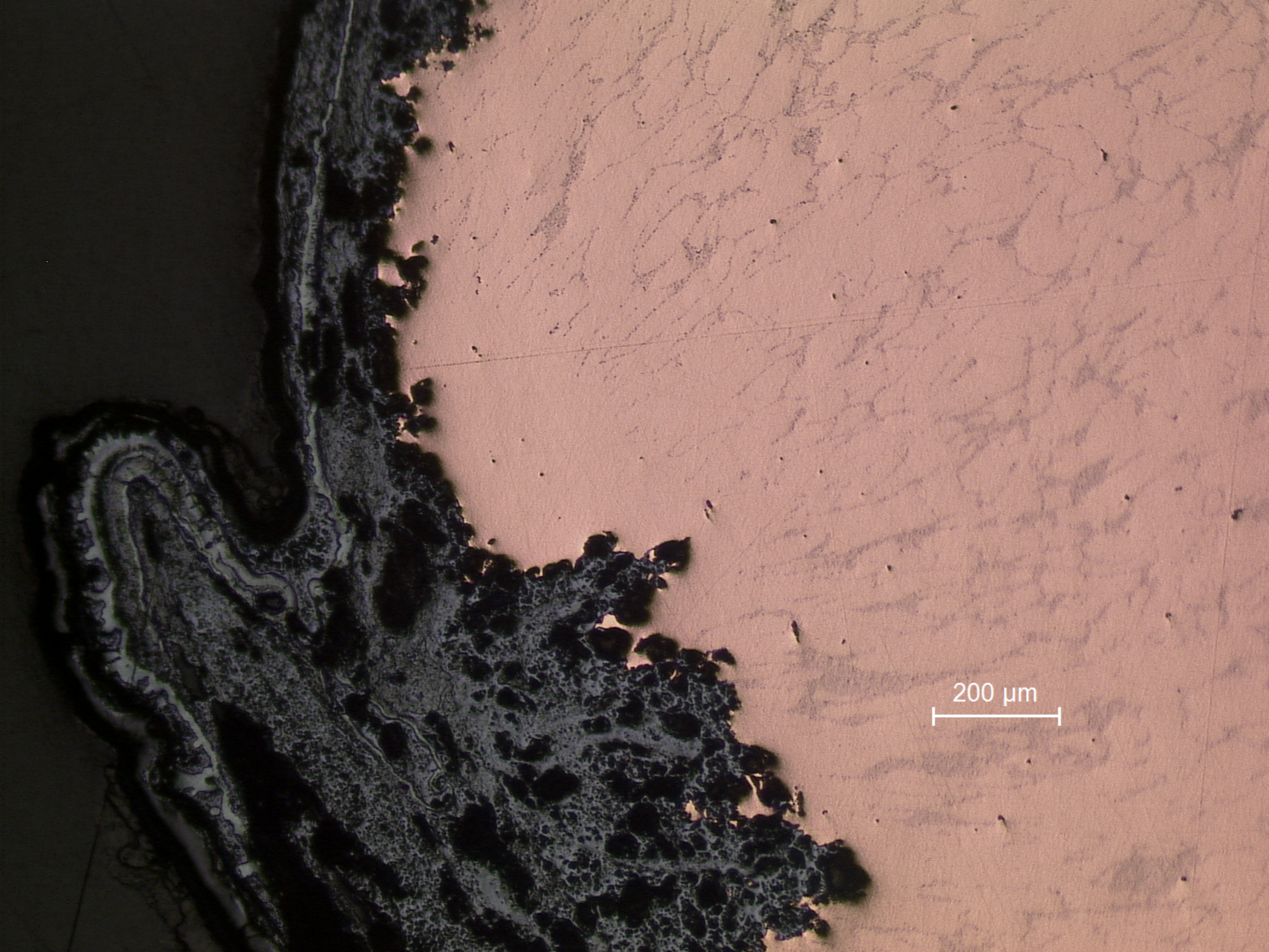
200 μm

B44.3
General view showing elongated grains, deformed in the direction of working (etchant: aqueous FeCl_3).



50 μm

B44.4
Detail showing the elongation of the grains (etchant: aqueous FeCl_3).

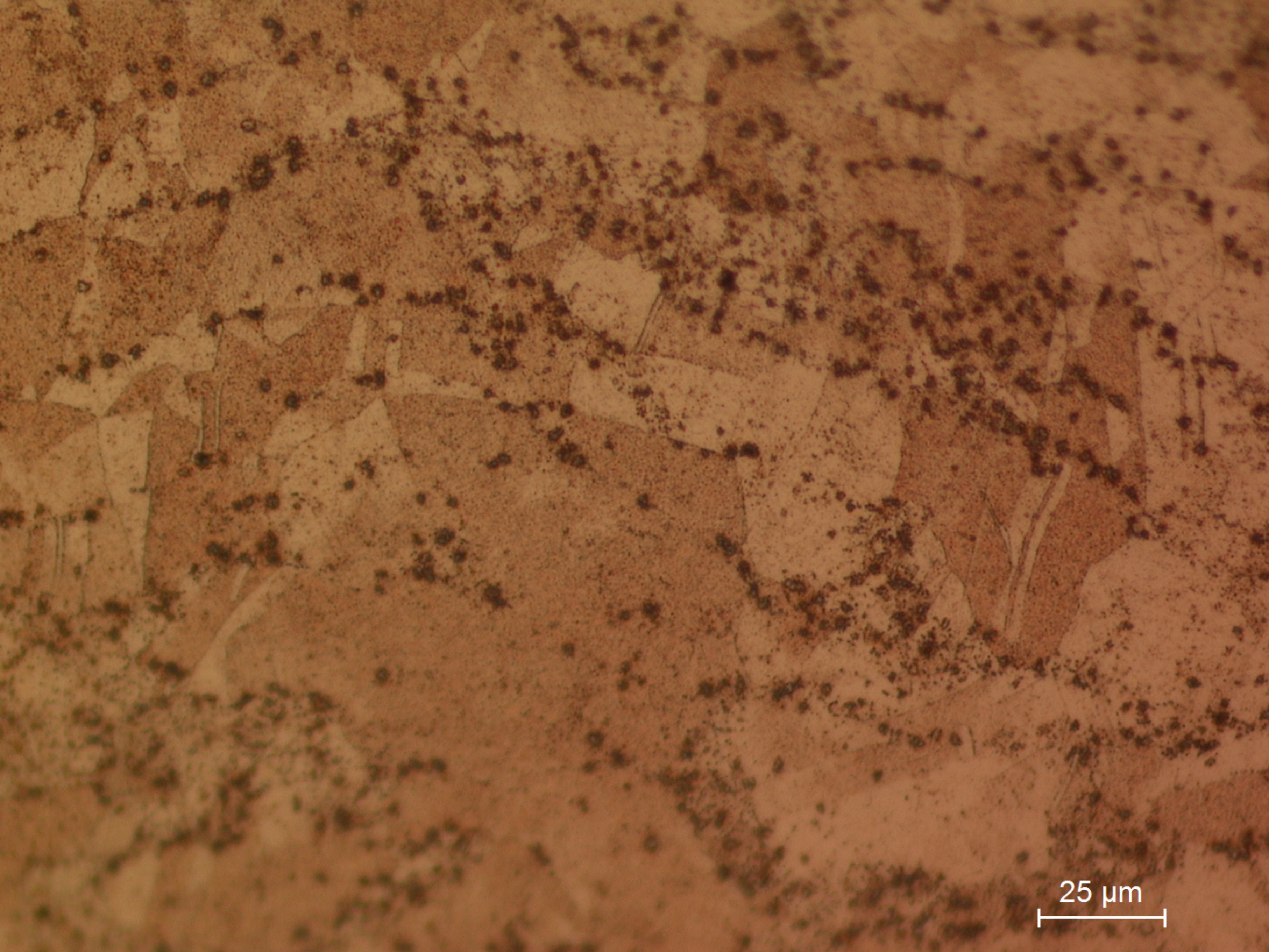


B44.5
General view of another region of the sample, showing the corrosion layer on the left and heterogeneous distribution of inclusions in the metal (in this case none are near the surface).



50 μm

B44.6
Detail showing the preferential situation of the globular inclusions along the grain boundaries.



25 μm

B44.7
Detail showing that even where grains are recrystallized (displaying a polygonal shape with annealing twins) the distribution of the inclusions reveals the deformation due to previous working (etchant: aqueous FeCl_3).