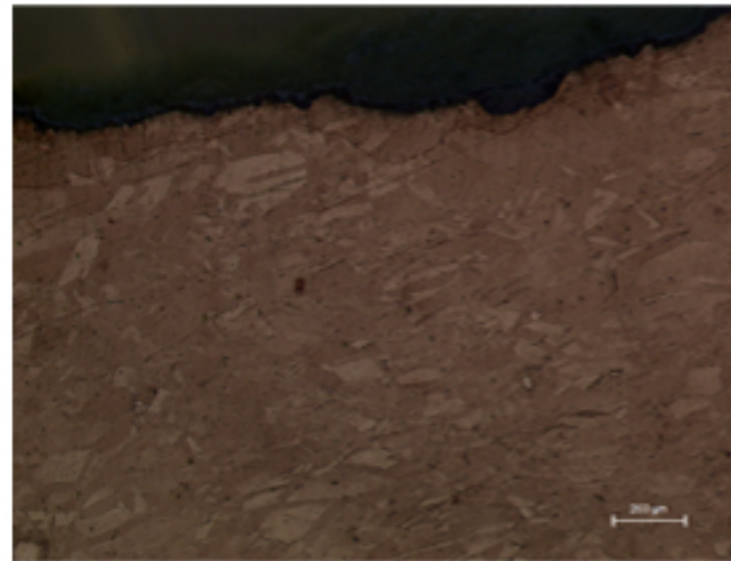
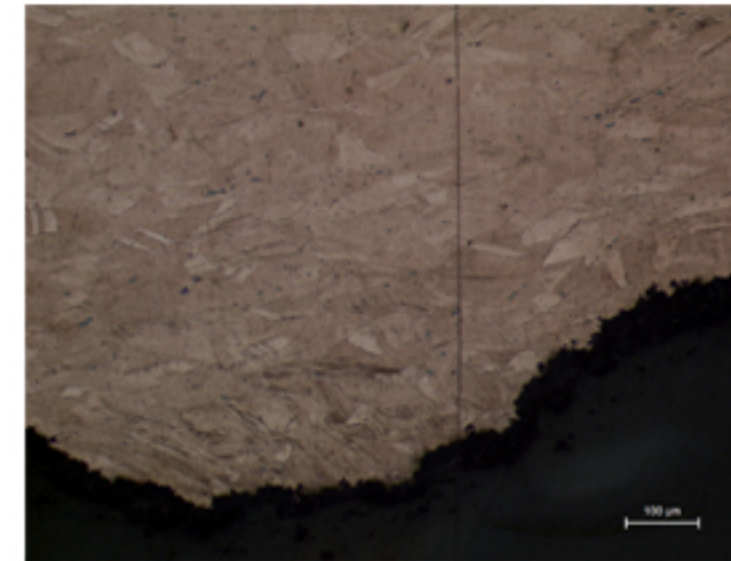


## B09 - COPPER COIN



B09.1



B09.2

### Identification

**Sample:** B09  
**Card reference:** C29  
**Origin:** Roman (Trajan)  
**Location:** n/a

### Description

Light powdery patina. Stretching caused during striking.

### Figure captions

B09.1

General view showing polygonal grains which are deformed in the direction perpendicular to striking; presence of annealing twins and some strain lines (etchant: aqueous  $\text{FeCl}_3$ ).

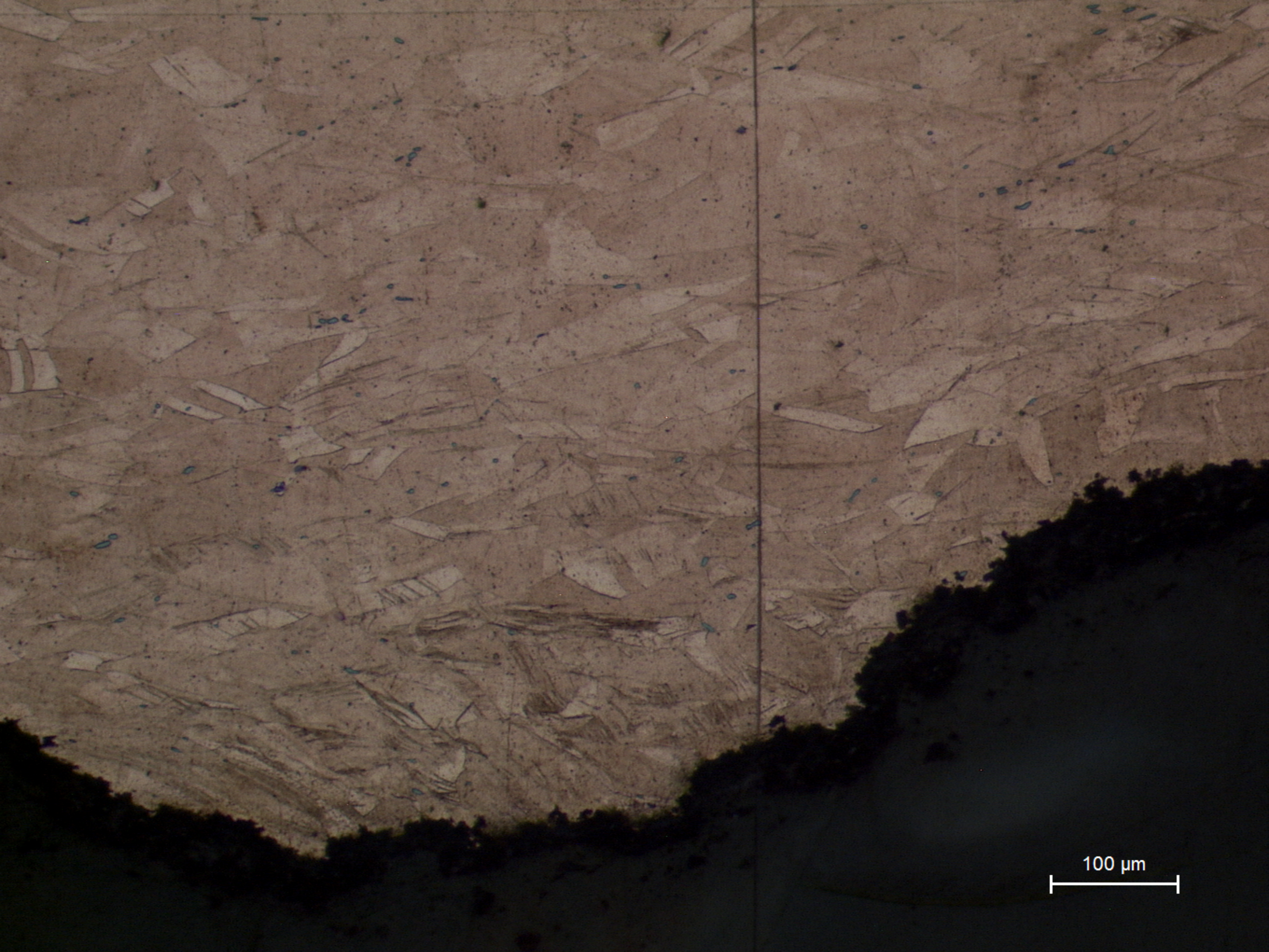
B09.2

Detail of an area near the surface showing a higher amount of strain lines due to more intense cold work (and consequent deformation) in this region (etchant: aqueous  $\text{FeCl}_3$ ).



200  $\mu\text{m}$

**B09.1**  
General view showing polygonal grains which are deformed in the direction perpendicular to striking; presence of annealing twins and some strain lines (etchant: aqueous  $\text{FeCl}_3$ ).



100 μm

**B09.2**  
Detail of an area near the surface showing a higher amount of strain lines due to more intense cold work (and consequent deformation) in this region (etchant: aqueous  $\text{FeCl}_3$ ).