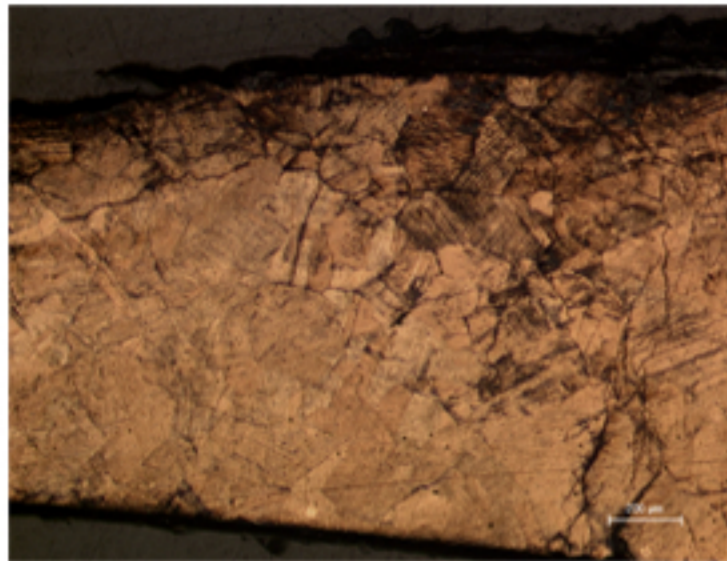


B03 - FRAGMENT OF A BRONZE VASE



B03.1

Identification

Sample: B03
Card reference: C36
Origin: Etruria

Description

Heavily corroded with a central intact metallic area.
Aspects of 'noble patina': malachite and azurite.
Transcrystalline cracks.

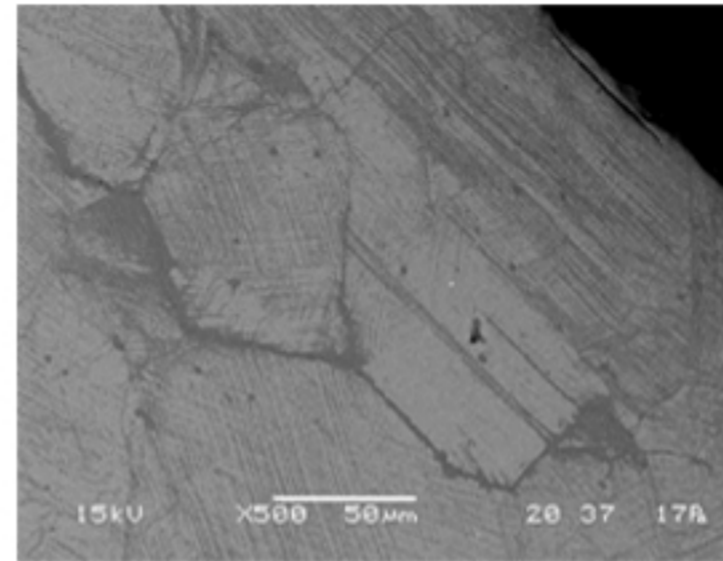
Figure captions

B03.1

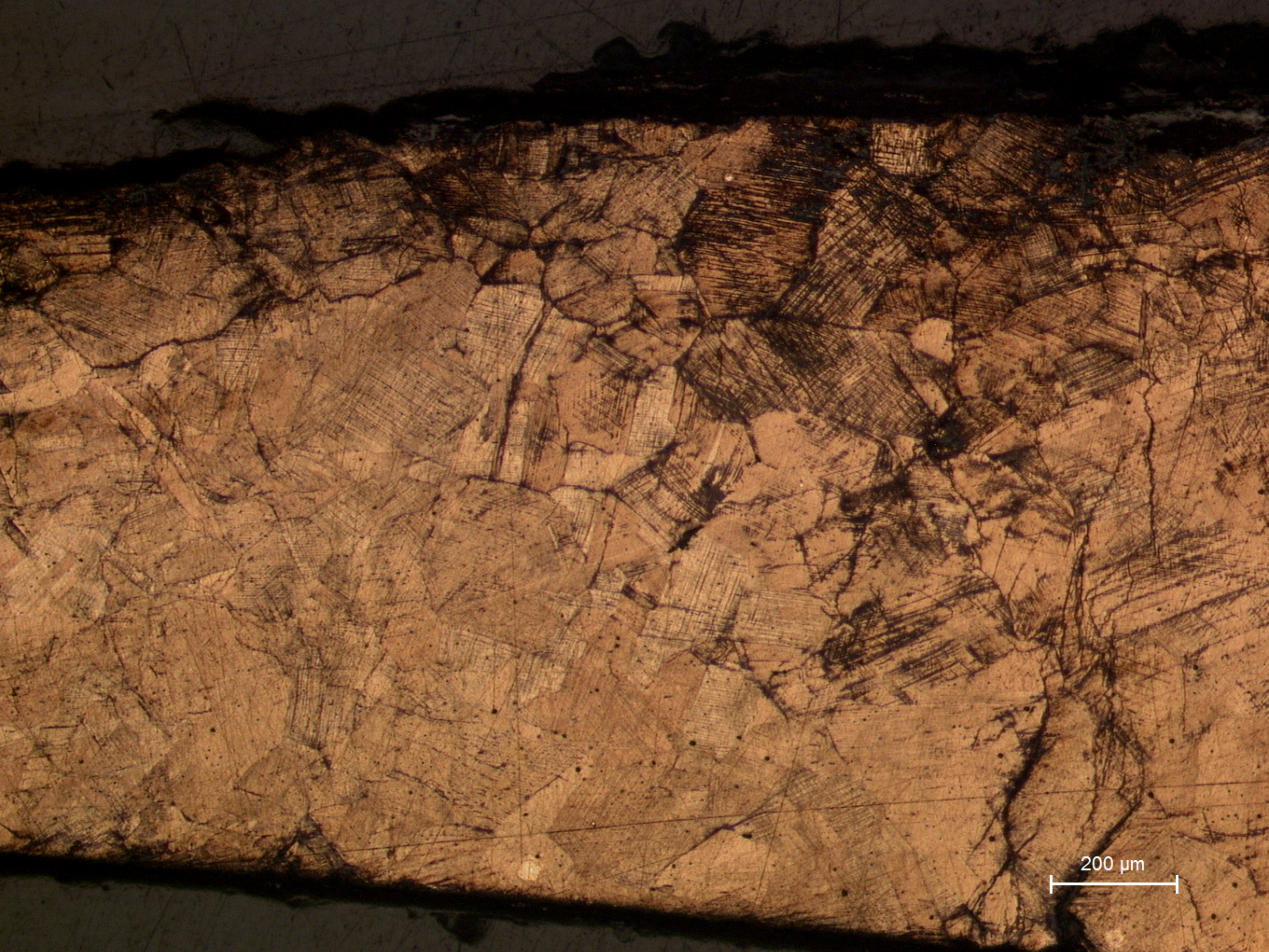
General view: showing polygonal grains with twins and several strain lines due to cold work, especially near the upper surface. Transgranular cracks are also apparent. (etchant: aqueous FeCl_3).

B03.2

SEM image showing cold work lines which run parallel with the surface, and some inter- and intragranular corrosion.

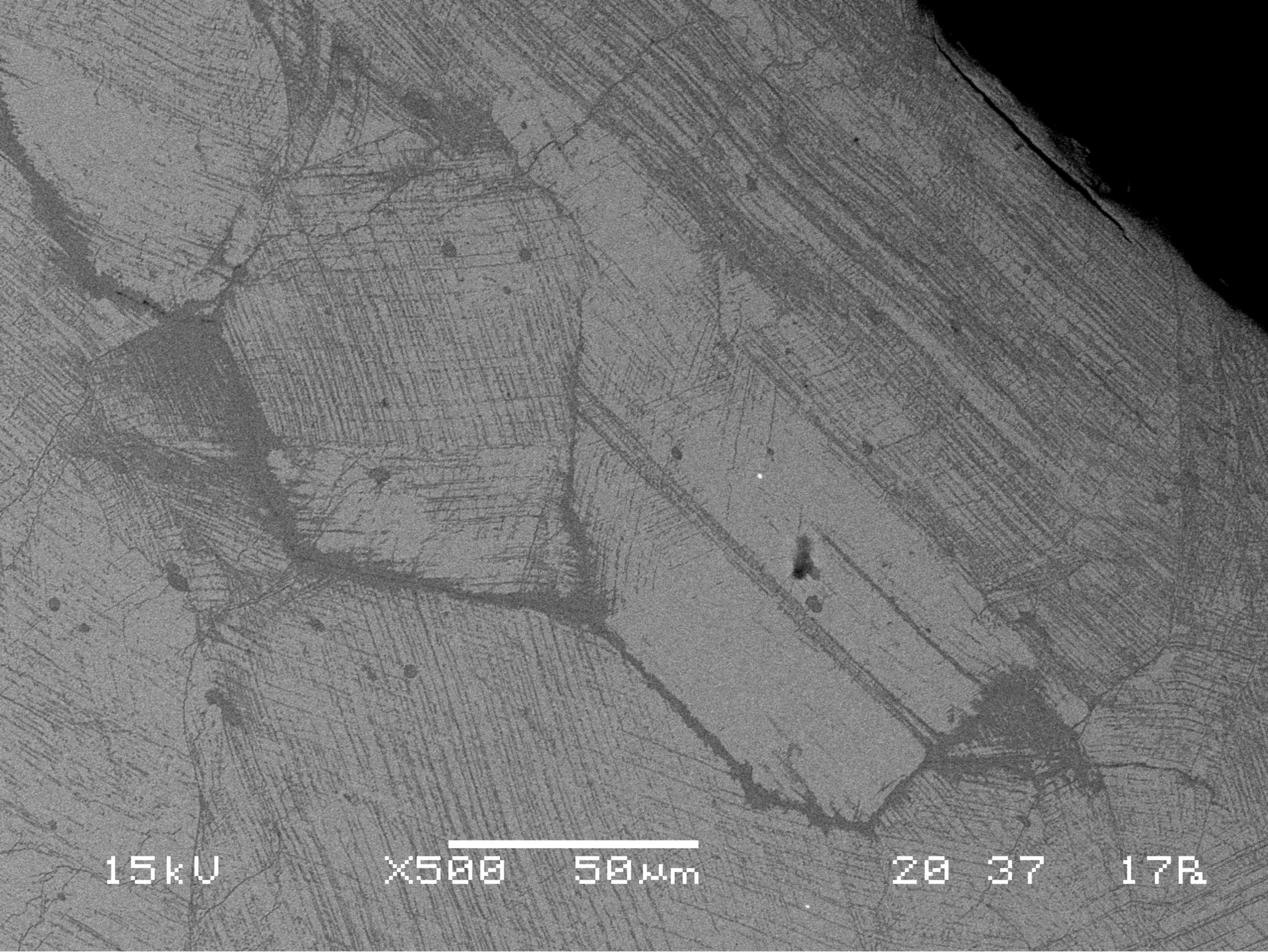


B03.2



200 μm

B03.1
General view: showing polygonal grains with twins and several strain lines due to cold work, especially near the upper surface. Transgranular cracks are also apparent. (etchant: aqueous FeCl_3).



15kV

X500

50µm

20

37

17R

B03.2

SEM image showing cold work lines which run parallel with the surface, and some inter- and intragranular corrosion.